



WOLVES V HULL CITY
SEAH STADIUM | SUNDAY 15TH SEPTEMBER 2024

WOLVES



 | **FEAR NOTHING**



CONTENTS:

- 1 Anna Morphet
- 3 Dan McNamara
- 5 Captain Morphet
- 6 Match action
- 8 Beth Roberts
- 10 Beth Merrick
- 12 Destination Turf Moor
- 14 Hull City
- 15 League table & player stats
- 16 Latest news
- 18 Stat Pack

PROGRAMME TEAM

Mike Capewell, Tony Leighton,
James Orotayo, Jack Thomas,
Luke Turner, Jenny Wilkes,
Synaxis Design Consultancy

Printed by
Purcell Branding



Good afternoon,

Welcome back to the SEAH Stadium for today's league fixture versus Hull City. Welcome to Chris and his team and hope the journey down has been a safe one.

It's been quite two weeks for the group and shows what football is all about with regards highs and lows. After the bitterly disappointing performance at home against Forest last week the players responded superbly well to beat the other title favourites Burnley on Sunday. We spoke at length through the week about how a performance was the focus for the game. The players delivered in all areas they were asked; it was an outstanding display full of all the values they need to represent this great football club. The result followed and we were able to create another great memory at an iconic stadium in front of a lively away following who were fantastic throughout.

Today we must now turn our full attention to Hull City. After visiting Hull last season in the FA Cup third round, we saw how tough they can be and how they can be dangerous if you aren't at 100%. The players have been brilliant this week in training and are really looking forward to being back at home in front of the fans. We know three points is a must today after such a great result last weekend.

Away from Wolves it's been great to see some of the loan players getting regular minutes and working their way into the starting 11s at other clubs. Amy Hare, Elise Stocking and Bethan Marriott have all been featuring for Sporting Khalsa of late. Mille Robinson has also been doing brilliantly at Worcester City, getting many valuable minutes. It's great to be working with two great clubs to help us develop the next generation of talent within the Wolves pathway.

Hope you all enjoy today's game and please be loud and proud once again.

Dan McNamara
Manager



**FEAR
NOTHING®**

**PURCELL
BRANDING**
GRAPHICS / SIGNAGE / INTERIORS / EVENTS

**MAKING YOUR BRAND
STAND OUT FROM
THE CROWD**

OFFICIAL PRINT PARTNER TO **Wolves**

hello@purcellbranding @purcellbranding @purcellbranding

MANDER
CENTRE

BIG Charity Day

SATURDAY
21ST SEPT
10 TO 4 PM

Mander Centre's BIG Charity Day
fundraising for The Wolves Foundation

DICKY DODD
HOSTING

PRIZE
WHEEL

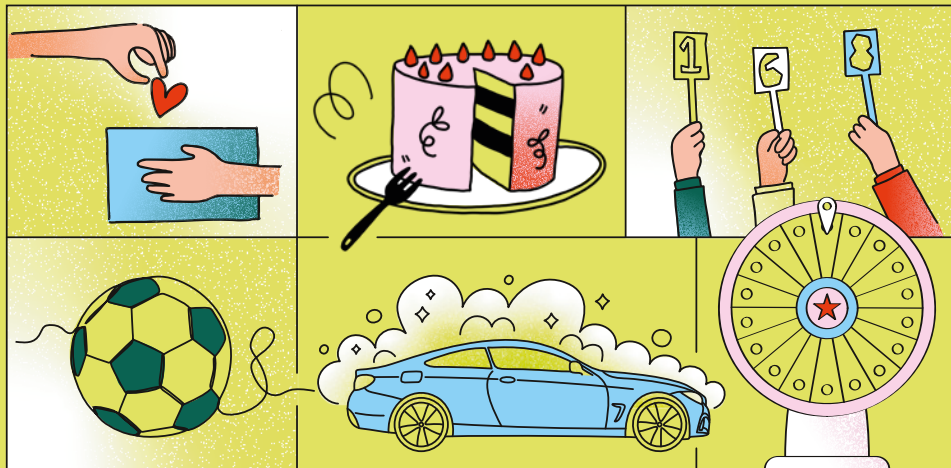
LIVE
AUCTION

CHARITY
CAR WASH

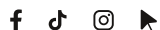
BAKE
SALE

WOLVES WOMEN
FC APPEARANCE

AND
MORE!



MANDERCENTRE.CO.UK



Anna Morphet's six-year spell at Wolves Women has been rewarded with the captaincy for the 2024/25 campaign.

Following Anna Price's retirement and Helen Dermody's departure over the summer, the defender will now take the armband on a permanent basis.

Arriving from Aston Villa in the summer of 2018, Morphet, then just a teenager, slotted straight into Dan McNamara's defence and has been a mainstay during her time.

Now 23, Morphet has made 145 appearances in old gold and has 48 goals to her name.

In recent seasons, silverware has been aplenty for Morphet who played key roles in the 2021/22 title success as well as back-to-back Birmingham Challenge Cup triumphs.

A leader beyond her years, Morphet's influence on and off the pitch was recognised with the captain's armband in the absence of Dermody and Price, with the defender leading the team out for the majority of the 2023/24 campaign.

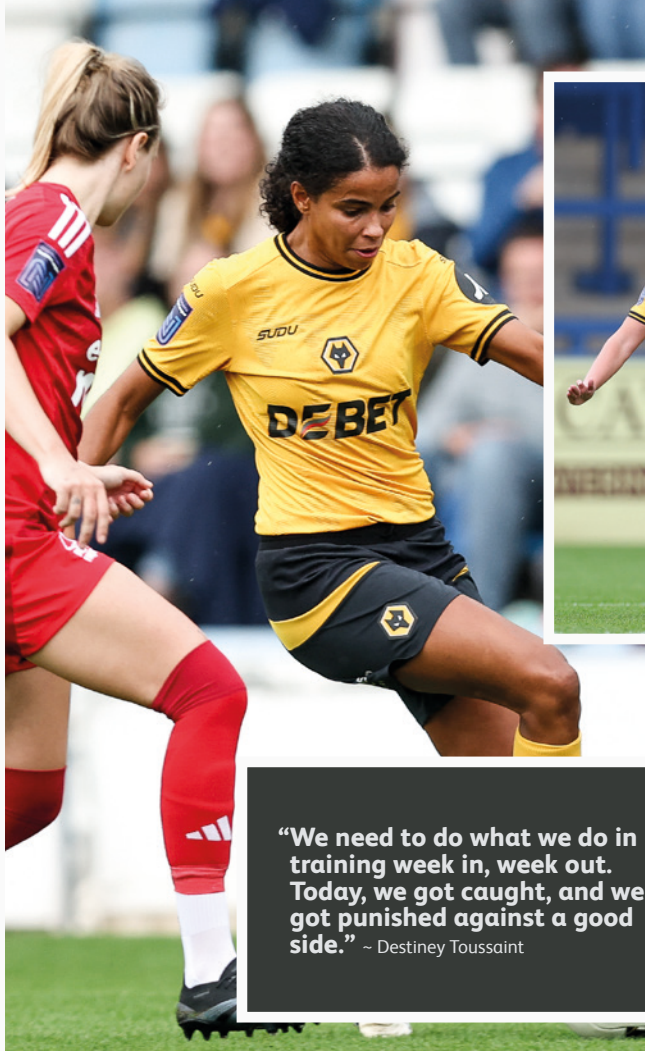
Now taking on the responsibility on a permanent basis, Morphet has expressed her delight and said: "It's a very proud moment for me and I'm very humbled to have that responsibility in this team and club.

"I'm always going to be learning, but it's a responsibility I'm really looking forward to. The girls are such a tremendous group of people and I'm very lucky to have them around me too.

"It is quite special. We talk about gold standards of captaincy – Anna Price is such a legend at the club. Personally, she's done so much for me as a person as well as a player.

"If there's anyone better to learn from, it's Perks. I know they are big shoes to fill but having her around the group still will be a big help for me."





“We need to do what we do in training week in, week out. Today, we got caught, and we got punished against a good side.” ~ Destiney Toussaint

TEAM
 Thomas
 Smith
 Johnson
 Jenner
 Roberts (Banaras 86)
 Holmes (Loydon 60)
 Anderson
 George (Fryer 86)
 Greengrass
 Hughes (Toussaint 60)
 J. Cross (Merrick 60)

BURNLEY 0 V WOLVES 1

GOALSCORER:
Hughes 17

Sunday 8th September
KO 2pm

TEAM
 Thomas
 Morphet
 George
 Hughes
 Greengrass (J. Cross 79)
 Johnson
 Anderson
 Toussaint (Smith 64)
 Roberts
 Jenner
 Merrick

“It was about the performance which we put in today, but to get the result as well is brilliant.”
 ~ Amber Hughes



Subs not used:
 Elbro
 Banaras
 Fryer
 Denham
 Hiscox



WOLVES 1 V FOREST 6

GOALSCORERS:
 Hughes 55
GOALSCORERS:
 Longhurst 24, Johnson 34, 36, 52,
 Domingo 41, Olding 85

Sunday 1st September
KO 2pm



BETH ROBERTS

Wolves Women full-back Beth Roberts is the first to sit in the programme hot seat this season to answer a few quirky questions.

WHAT IS THE MOST MEMORABLE PLACE YOU'VE PLAYED FOOTBALL?

The one that comes to mind first was when we played West Brom at the Hawthorns in 2022. That was in my first season at Wolves and I scored the first goal and I think the whole situation around it, being at the Hawthorns, being a derby, being against West Brom, that game just really sticks out for me. But, also, playing at Molineux has been amazing too.

WHAT ARE THE STRANGEST SUPERSTITIONS YOU'VE SEEN FROM TEAMMATES?

I have a set routine before every game, but I wouldn't say it's strange. I have the same thing for breakfast, and what I do in the morning, but when I go out onto the pitch, I have to go left foot first over the line. But the strangest one for me, because I don't understand why, is that in every team I've played, there is always someone who has to come out of the changing room last. For every game, they are always at the back in the line-up and they are always the last one out.



WHAT IS THE GREATEST COMEBACK YOU'VE BEEN INVOLVED IN?

It has to be the comeback against Forest last season. I'm sure everyone will say this one, because it was a crazy game. We were losing 2-0 going into the second half, then conceded again after half-time, but we came back to win 4-3. I was subbed off at half-time, but still, being part of it from the side of the pitch and watching the girls come back and win that game was incredible.

WHICH OF YOUR WOLVES TEAMMATES HAS THE WORST TASTE IN MUSIC?

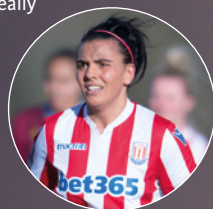
I know she's left now, but I feel like Ellie Wilson has some rogue choices. We have a playlist which we share on Spotify and we all put songs on it, and whenever one of hers came on in the changing room then we knew it was Ellie Wilson's. I have a bit of a mix that I contribute, a few upbeat ones, a few classics, but I haven't really got a specific music taste, I like a bit of everything.

WHAT IS THE STRANGEST MOMENT YOU'VE EXPERIENCED IN A GAME?

It wasn't that strange, but it was funny. I was playing a game for Stoke, it was at Bradford away and it was really windy, and the ref went to send one of our players off, and because it was so windy, the card blew away in the wind and he was chasing the card around the pitch, trying to get it back.

WHO IS THE BIGGEST CHARACTER IN A DRESSING ROOM YOU'VE BEEN IN?

We don't have any really big personalities at Wolves, we're all quite level-headed, but when I was at Stoke, I played with Tash Tezgel. A lot of people in women's football will know her, and she is one of the biggest characters you could meet. She was so funny, always joking around, and she's really loud, so she's got to be the one.



WHAT IS THE ODDEST THING YOU'VE HEARD SAID DURING A MATCH?

In one of our pre-season games this summer, I don't think we'd even got to 60 minutes yet and the striker on the other team said, "I can't wait for this game to finish – I'm blowing!" But that's what pre-season is like.

WHICH OF YOUR WOLVES TEAMMATES HAS THE WORST DRESS SENSE?

There's no one who really dresses badly, but Meesha [Dudley-Jones] who has just left, I wouldn't say it's bad, but she has some rogue outfits at times. She wears them with confidence though and they look good on her, so I'll give her that.



WHAT IS THE MOST UNEXPECTED RESULT YOU'VE HAD?

It would probably be Reading in the FA Cup last season. None of us went into the game not expecting that we weren't going to win, but we were definitely underdogs. The way the girls played from the first minute until the last minute, no one could have expected a performance that amazing. To go and beat a Championship side was brilliant and I don't think a lot of people outside our team thought we were going to win that.

WHAT IS THE BEST GOAL YOU'VE EVER SEEN SCORED?

Since I've been at Wolves, I think Beth Merrick has probably scored about 10 screamers, so the goal against Forest which she scored last season which she took first time and just slotted into the bottom corner was amazing. The best goal I've scored is the one I mentioned earlier against the Baggies.





WOLVES

SUDU



DEBET

BETH MERRICK

WOLVES | FEAR NOTHING

Destination Turf Moor

by Matt Ponter

Wolves Women commentator Matt Ponter takes us behind the scenes of last Sunday's trip to Turf Moor.

After our home defeat to Nottingham Forest, what Dan McNamara's side needed was an immediate response. A trip to Burnley however, wasn't ever going to be an easy task. It probably wasn't made any nicer with the journey up consisting of dark grey clouds, very few breaks in heavy rain, and a slow and steady M6.

All being said though, we couldn't have asked for a better result from the girls who showed character and fight throughout the entire 90 minutes and claimed a great victory in Burnley's backyard of Turf Moor.

Turf Moor is a blend of old and new. Where our supporters were housed in the Bob Lord Stand, there are still wooden seats shaded in claret and blue. The same can be said for the Ladbrokes Stand which plays host to away supporters for a men's first team game.

Behind, lies the Turf Moor cricket ground which is home to Burnley Cricket Club. So, if you are stuck for something to do on a Saturday before the match, you could always pad up and jump into the nets to pass some time!

For the rest of the media team and I, the James Hargreaves Stand was where we were housed for the afternoon, right at the back of the upper tier. Despite the big stair climb, the view at the top looking down onto the pitch was incredible. On a clear day, beyond the Burnley Wood housing estate, there is a fantastic view of the parish of Dunnockshaw and beyond.

On our arrival there was a friendly greeting from the Burnley staff and security. Mark, the man in charge of the media, was very informative and helpful. He was so informative that he even told us about a great sandwich shop a short walk away from the ground, which we all agreed we wish we'd have known about before arriving.

As always, our first port of call was to ensure that our social media was up to date with arrival pictures and eventually team news. The students helping this year sat with media lead Luke to make sure all channels were covered. Meanwhile, I had started to make the journey up the staircase and onto the middle concourse, before finding my way to the press box.

Following a quick set-up, and getting a team sheet written out, I was ready and raring to go. We felt fairly far away from both sets of supporters, though listening back to the commentary you would have thought they were in the stands with us.

There was a great noise from the travelling Wolves faithful, who urged the side on even after the full-time whistle. They definitely brought the noise when Amber Hughes scored the only goal of the game on 17 minutes, and what a move it was to set it up.

Anna Morphet's short corner to Becky Anderson could easily have been picked apart by the Claret's defence. A quick pass back to Morphet however allowed for a pin-point left footed delivery into the six-yard box, where Hughes was ready to leap ahead of the Burnley keeper.

The Old Gold had a few chances after that to double their lead, but the tactics from Dan McNamara to defend worked perfectly. Even a late chance that fell to Brenna McPartlan was dealt with as Bec Thomas made a superb save to prevent a late Burnley equaliser.

Dan praised the defensive performance in our post-match interview and made a point of telling the team to enjoy defending. From where we were in the press box it was great watching everyone get involved in clearing the ball away and taking it up to the corner flag at the other end of the pitch.

Overall it turned out to be a great trip to the home of Burnley Football Club, even with the overcast and wet weather the girls left everything on the surface of Turf Moor and brought the three points back home with them.





Hull City Ladies

Hull City Ladies were founded in 2001 commencing in the Yorkshire & Humberside League. From there they progressed through the North East Regional League and the Northern Combination to eventually reach the fourth tier in 2015. Along the way they captured the North East Regional League Premier Division Championship twice.

In 2011 the club merged with local side Beverley United, a move that kickstarted a period of growth during the 2010s. The Tigresses pride themselves as an independent club and don't currently have any ties to Hull City AFC. They are rooted firmly in their community and recent exploits have seen them focus on developing young talent in the area.

The club strives both on and off the field to enhance the women's game within the heart of the city, to create a lasting legacy for the people in the region. The FA Girls' Emerging Talent Centre gives opportunities to 160 girls from under-9s to under-16s and the club reaches over 2000 girls within its youth programmes through holiday camps, development centres, the Tigress Club and school partners.

This isn't Hull's first taste of the National League North, having played in the division for four consecutive years from 2018 to 2022. That same year, they hired their current Manager Chris Hames, who has since also taken on the role of Director of Football.

Hames masterminded promotion from the FA WNL Division One North last year as Champions, and they will be hoping to stabilise in the division this time around. The season was a huge step in the right direction, winning 22 out of 30 games on their way to a dominant title win. They also scored some 82 goals and embarked on a run to the third round of the FA Cup, where they lost to Wolverhampton Wanderers.

LEAGUE TABLE 2024/25

Pos Team	P	HOME					AWAY					TOTAL					GD	PTS
		W	D	L	F	A	W	D	L	F	A	W	D	L	F	A		
1 Nottingham Forest	4	2	0	0	16	0	2	0	0	9	1	4	0	0	25	1	24	12
2 Rugby Borough	4	1	0	1	4	3	2	0	0	15	1	3	0	1	19	4	15	9
3 Burnley	4	1	0	1	9	1	2	0	0	8	2	3	0	1	17	3	14	9
4 Wolverhampton Wanderers	4	1	0	1	5	6	2	0	0	3	1	3	0	1	8	7	1	9
5 West Bromwich Albion	4	2	0	0	8	0	0	1	1	2	3	2	1	1	10	3	7	7
6 Derby County	4	1	0	1	3	3	1	1	0	4	1	2	1	1	7	4	3	7
7 Liverpool Feds	4	1	1	0	3	2	1	0	1	5	5	2	1	1	8	7	1	7
8 Stoke City	4	0	0	2	1	8	2	0	0	3	1	2	0	2	4	9	-5	6
9 Hull City	4	0	0	2	2	5	1	0	1	4	11	1	0	3	6	16	-10	3
10 Halifax	4	0	1	1	0	10	0	0	2	1	6	0	1	3	1	16	-15	1
11 Stourbridge	4	0	0	2	3	7	0	0	2	0	13	0	0	4	3	20	-17	0
12 Sporting Khalsa	4	0	0	2	2	9	0	0	2	0	11	0	0	4	2	20	-18	0

PLAYER STATS 2024/25

#	Name	League		WFA Cup		Lge Cup		BCC		2024-25		Wolves Total	
		apps	gls	apps	gls	apps	gls	apps	gls	apps	gls	apps	gls
1	Maddie Elbro											25	0
3	Anna Morphet	3	1			1	0			4	1	145	48
4	Summer Holmes	3	0			1	0			4	0	86	3
5	Emma Cross					0+1	0			0+1	0	250	3
7	Tammi George	4	1							4	1	141	42
8	Merrick Will											23	1
9	Jade Cross	3+1	0			1	0			4+1	0	270	169
10	Abi Loydon	1+2	0			1	0			2+2	0	4	0
11	Amber Hughes	3	3							3	3	81	70
12	Charlotte Greengrass	4	1			1	1			5	1	5	2
13	Bec Thomas	4	0			1	0			5	0	110	0
14	Martha MacPhail	0+1	0			1	0			1+1	0	2	0
15	Layla Banaras	0+1	0							0+1	0	11	0
17	Katie Johnson	4	1			0+1	0			4+1	1	75	9
18	Hannah Fryer	0+2	0			1	0			1+2	0	26	1
19	Becky Anderson	3				0+1	0			3+1		4	0
20	Ania Denham	0+1	1			1	0			1+1	1	10	2
21	Destiney Toussaint	1+1	0							1+1	0	47	24
22	Beth Roberts	4	0			1	0			5	0	48	5
23	Josie Smith	2+2	0			1	0			3+2	0	13	0
25	Amelia Hiscox	0+1	0							0+1	0	2	0
27	Abbi Jenner	4	0			0+1	0			4+1	0	5	0
28	Beth Merrick	1+1	0							1+1	0	104	36
31	Skye Owen											4	0

All stats correct at time of going to print.

And in Other News...

After announcing her retirement over the summer, Wolves Women legend Anna Price was honoured on the pitch before the Nottingham Forest game. Captain Anna Morphet was on hand to present her with a framed shirt and a special gift from the players. After joining the club as an eight-year-old, Anna progressed through the ranks and was part of the senior side for the last 23 seasons, making a total of 358 appearances in old gold. She leaves an incredible legacy at the club. Thank you Perksy!



Beth is back!

Congratulations to Josie Smith who was named Player of the Match in the Nottingham Forest game. The award, sponsored by Purcell Branding, was presented by Wolves Women Chair Jenny Wilkes.

Welcome back to fan favourite Beth Merrick who has returned to the club a little over a month after her departure. It's great to have you back where you belong Beth.

Good luck to all our girls' teams as their 2024/25 fixture programme gets underway in the Junior Premier League.

Today's other FA WNL fixtures

Derby County v Liverpool Feds
Nottingham Forest v Burnley
West Bromwich Albion v Rugby Borough

**FEAR
NOTHING**

Upcoming fixtures

Next Sunday we're away to Stoke City with the game being played at the Bet 365 Stadium, ST4 4EG, with a 2pm kick-off. That's closely followed by a midweek game under the lights against Sporting Khalsa on Wednesday 25th September at Noose Lane, WV13 3BB with a 7.45pm kick-off.

After losing to Stoke City in the Determining Round of the FA WNL Cup, we will now enter the Plate competition. We have a bye to the first round which will be played on Sunday 29th September.

Our next home game in the FA WNL is on Sunday 6th October when we entertain Rugby Borough with a 2pm kick-off.



Thank you
Perksy!



Josie Smith,
Player of the
Match vs
Nottingham
Forest

FAWNL	Name	1st sub	TEAM	Home fixture	+	Own goal
Adobe WFA Cup	Name	2nd sub	Team	Away fixture	!	Yellow card
League Cup/Plate	Name	3rd sub	#	Goal scored	!	Red card
B'ham Challenge Cup	Name	4th sub	!	Penalty scored		
	Name	5th sub				

DATE	OPPOSITION	RES/KO	POS	ATT	REFEREE											SUBSTITUTES							
AUGUST																							
18	STOURBRIDGE	W 4-0	3	407	S Anderson	Thomas	Johnson	Roberts	Morphet	Jenner	Holmes	Loydon	George 1	J Cross	Greengrass 1	Hughes 1	Smith	Hiscox	MacPhail	Denham 1	Fryer	Elbro	Banaras
25	Derby County	W 2-1	4	338	A Greenwood	Thomas	Johnson 1	Roberts	Morphet 1	Jenner	Holmes	Smith	George	J Cross	Greengrass	Anderson	Loydon	Elbro	Fryer	E Cross	MacPhail	Banaras	Denham
28	STOKE CITY	L 1-3	-	297	D Chappell	Thomas	Fryer	Roberts	Morphet	MacPhail	Holmes	Loydon	Smith	J Cross	Greengrass 1	Denham	E Cross	Anderson	Johnson	Jenner	Elbro	George	Toussaint
(LgCup Determining Round)																							
SEPTEMBER																							
1	NOTTINGHAM FOREST	L 1-6	5	449	A Kennedy	Thomas	Smith	Roberts	Johnson	Jenner	Holmes	Anderson	George	J Cross	Greengrass	Hughes 1	Loydon	Merrick	Toussaint	Fryer	Banaras	Elbro	Denham
8	Burnley	W 1-0	4	-	L Harland	Thomas	Johnson	Roberts	Morphet	Jenner	Merrick	Anderson	George	Toussaint	Greengrass	Hughes 1	Smith	J Cross	Elbro	Fryer	Banaras	Hiscox	Denham
15	HULL CITY																						
22	Stoke City																						
25	Sporting Khalsa																						
OCTOBER																							
6	RUGBY BOROUGH																						
13	West Bromwich Albion																						
27	HALIFAX																						
NOVEMBER																							
10	Liverpool Feds																						
17	Stourbridge																						
DECEMBER																							
15	DERBY COUNTY																						
JANUARY																							
5	Nottingham Forest																						
12	BURNLEY																						
FEBRUARY																							
2	Rugby Borough																						
12	SPORTING KHALSA																						
23	STOKE CITY																						
MARCH																							
9	Hull City																						
23	WEST BROMWICH ALBION																						
APRIL																							
13	Halifax																						
27	LIVERPOOL FEDS																						



Fixtures correct at time of going to print.

To see our fixtures please scan the QR code or visit wolves.co.uk/fixtures/womens-first-team

Admission to Wolves Women league games at SEAH Stadium is free for Wolves and Telford United season ticket holders.

For non-season ticket holders, tickets can be purchased online in advance from the Telford United website for a reduced price of £5 for adults, £4 for concessions and £1 for 3-16s. Payment is also accepted on the gate via card or cash with admission costing £6 for adults and £5 for concessions.

Thank you for your support.



SEAH STADIUM SUNDAY 15TH SEPTEMBER 2024

WOLVES

TIGERS

- 1 Maddie Elbro
- 3 Anna Morphet
- 4 Summer Holmes
- 5 Emma Cross
- 7 Tammi George
- 8 Merrick Will
- 9 Jade Cross
- 10 Abi Loydon
- 11 Amber Hughes
- 12 Charlotte Greengrass
- 13 Bec Thomas
- 14 Martha MacPhail
- 15 Layla Banaras
- 17 Katie Johnson
- 18 Hannah Fryer
- 19 Becky Anderson
- 20 Ania Denham
- 21 Destiney Toussaint
- 22 Beth Roberts
- 23 Josie Smith
- 25 Amelia Hiscox
- 27 Abbi Jenner
- 28 Beth Merrick
- 31 Skye Owen

- 1 Abi Wallace
- 2 Cath Hamill
- 3 Jo Symington
- 4 Amy Wilson
- 5 Ellice Zand
- 6 Tillie Oxley
- 7 Liberty Hero
- 8 Ellie Tanser
- 10 Rachael Ackroyd
- 11 Maddi Green
- 12 Kirstie Hunt
- 13 Georgia Wattam
- 14 Olivia Harness
- 15 Ruby Dawson
- 17 Rowen Crawshaw
- 18 Chloe Copsey
- 19 Helen Lynskey
- 20 Shakala Brookes
- 23 Lila Abbott
- 24 Hope Knight
- 25 Lily Cockerill
- 26 Rosie Caley



MATCH OFFICIALS

Referee: Stephen Brown | Assistant referees: Ryan Jennings, Ryan Dobson

NEXT UP AT SEAH STADIUM

Rugby Borough
Sunday 6th October 2024, 2.00pm | FA WNL

