



NEW BUCKS HEAD STADIUM
WEDNESDAY 6TH SEPTEMBER 2023

**WE ARE
WOLVES**





**COVER STAR:
AMBER HUGHES**

**INSIDE TONIGHT'S
MATCHDAY PROGRAMME:**

- 3 Dan McNamara
- 5 Jenna Burke-Martin
- 6 Beth Roberts
- 8 Match Reports
- 10 Olivia Fergusson
- 12 Wolves Women: A Brief History
- 14 Stourbridge
- 15 JT's Pic of the Week
- 16 Rachel Unitt
- 18 Stat Pack

PROGRAMME TEAM

Mike Capewell, Tony Leighton, Ed Martin, James Orotayo, Jack Thomas, Luke Turner, Jenny Wilkes, Synaxis Design Consultancy

Printed by
Purcell Branding

**PURCELL
BRANDING**
GRAPHICS / SIGNAGE / INTERIORS / EVENTS

**MAKING YOUR BRAND
STAND OUT FROM
THE CROWD**

OFFICIAL PRINT PARTNER TO **Wolves**

hello@purcellbranding @purcellbranding @purcellbranding



**MANAGER
DAN McNAMARA**

Good evening all,

Welcome to the New Bucks Head for the first time this campaign.

After two very tough away games to begin the league season we are delighted to be returning home and playing in front of our fans this evening.

The players have been fantastic over the last three fixtures. We set some realistic expectations regarding points returns after being handed two very tough away opening league fixtures, and we are delighted to have picked up four points from a possible six having travelled to both Derby and Burnley.

Sunday was a superb team performance and a real showpiece of the quality now operating in Tier 3. There were chances to win it at both ends of the pitch and I'm sure on reflection we will see it as a great point as the season goes on.

Tonight promises to be another tough fixture against a Stourbridge side who will be high on confidence having nearly beaten a tough Halifax team on Sunday. The players know the challenges ahead this evening and first and foremost we must match their intensity and desire to compete before anything.

This evening also sees us say goodbye to a huge player and personality from the group. Kelly Darby has announced her retirement from the game to spend more time with her young boy Ralphie and her family. Over the past three years Kelly has been more than just a player to this club and has played a huge part in the success we have had.

Having achieved so much in her career I'm sure she'll look back on fond memories as a Wolves player and be proud of her achievements.

**“FOR THE FANS,
LET’S HOPE WE
CAN HAVE ANOTHER
SUCCESSFUL SEASON
AND KEEP BUILDING
TOWARDS OUR
GOALS.”**

This year promises to be the toughest one yet and we will need you to stick by us throughout.

First up let's try and get another three points this evening, and I hope you'll join me in having a samosa from the fantastic Manny and his family. It's brilliant to have them down this evening supporting a fantastic cause.

Sing loud and proud.

Macca

ALL DAY CAFE & BAR

FOLLOW US:
@AVACAFEBAR

Ava's

CAFÉ & BAR

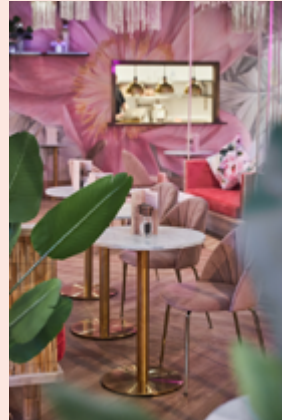
1ST FLOOR, FRASERS,
MANDER CENTRE,
WOLVERHAMPTON,
WV1 3NN



Ava's Café & Bar is situated on the 1st floor of luxury retailer FRASERS, Wolverhampton. Offering everything from brunch and small plates, to grilled sandwiches & delicious cakes - with coffee and cocktails on the menu too, all set in beautiful surroundings.



Ava's also has a bar so you can sit back and enjoy spritzer cocktails, local Ludlow Gins as well as signature wines, beers & mocktails. The cafe & bar is passionate about serving fresh, quality food & fantastic coffee.



20% DISCOUNT

RECEIVE 20% OFF YOUR TOTAL BILL WITH THIS VOUCHER

Hand this voucher in at the till on your visit. Valid until 30/09/2023. One voucher per transaction. No photocopies. Not to be used in conjunction with any other offer.

MANDER CENTRE

Ava's CAFÉ & BAR

Good evening and welcome back to the New Bucks Head.

Last season saw us narrowly missing out on the top spot in the league on just goal difference, and a huge increase in attendance at our home games too. I would like to extend my thanks to all the players, staff, volunteers and fans for their unwavering support across last season. Especially Macca, who continues to drive female football year on year at Wolves.

Off the pitch we have been working hard to make changes to our programme, moving from the RTC programme, into a new era with the Emerging Talent Centre. This has opened up more opportunities for young girls to be part of Wolves this season. We currently hold the licence for Under 10 to Under 14 age groups. Alongside the ETC we have our girls' Academy squads with Under 10s to Under 16s all competing in boys' leagues within the JPL. Their season kicks off on 9th September so good luck to them all and I look forward to watching the young talent we have here develop towards the first team across the season.

The other change this season is moving our reserves team to Under 21s. This is to support the transition of the Under 16s into senior football and to allow us to bridge the gap between youth and senior football, including our day release programme with further support on and off the pitch. Tom Warren was with the girls' and women's programme for a long time and had been a key member of staff, so I'd like to wish him the best and express my thanks for the commitment to the programme.

After Tom's departure we took time in selecting the right person to come in and lead the new programme. I'd like to welcome Darel Tidman-Poole back to Wolves as she becomes the new Under 21s Manager for the women. Darel brings many years' experience in both youth and adult football in the female game.

“I'M DELIGHTED TO BE BACK AT THE NEW BUCKS HEAD TONIGHT TO START OUR HOME GAMES THIS SEASON AND FOR THE FULL SEASON AHEAD.”

It was brilliant getting off to a winning start on the opening day against a very good Derby side, and to secure a place in the League Cup last weekend at Compton.

I look forward to the remaining fixtures for the upcoming season, and wish Macca and the first team staff the best of luck in the league campaign.

Jenna



HEAD OF WOMEN'S & GIRLS FOOTBALL
JENNA BURKE-MARTIN

Welcome Merrick Will

Wolves Women have welcomed midfielder Merrick Will to the pack for the 2023/24 campaign.

Formerly of Coventry United, Will brings experience and quality to the midfield engine room having previously spent four seasons in the Championship with London Bees.

Will has also enjoyed time in the southern division of the National League with Oxford United, alongside stints in the second tier at Millwall and Watford.

On joining McNamara's side Will said: "I really like the atmosphere around the club. It's really 'one pack' and I think that's been mentioned by Macca quite a lot, but I do really like that idea. That's something that brought me to the club and something that resonates within me – this is somewhere I wanted to be and felt like it was my time to be here.

"The girls are ready to kick on and achieve that next goal of theirs which they've been so close to over the last two seasons. I'd love it if I could hopefully help the girls and be a part of that."

Will believes her experience will prove a valuable addition to the squad and hopes her style of play in the heart of the midfield can push the team on in what promises to be another highly competitive campaign.

"I spent quite a few seasons in the Championship so I'd like to think that's what I can bring to the group and help the girls get over that hurdle," Will continued.

"I've only experienced the National League for one year and that was when I was with Oxford in the southern. I don't know much about the northern, so I think it will be a big learning curve for me to get used to the girls I play with, but also the other teams in the league.

"I think I'm quite a tenacious midfielder and I like to get the tackles in. I can break up play, move the ball along and there are a couple of goals in there too."

LEAGUE TABLE 2023/24

Pos	Team	P	HOME					AWAY					TOTAL					GD	PTS
			W	D	L	F	A	W	D	L	F	A	W	D	L	F	A		
1	Nottingham Forest	2	1	0	0	7	0	1	0	0	4	1	2	0	0	11	1	10	6
2	Burnley	2	0	1	0	1	1	1	0	0	3	2	1	1	0	4	3	1	4
3	Wolves	2	0	0	0	0	0	1	1	0	3	2	1	1	0	3	2	1	4
4	Newcastle United	1	0	0	0	0	0	1	0	0	4	0	1	0	0	4	0	4	3
5	Stoke City	2	1	0	0	4	0	0	0	1	1	3	1	0	1	5	3	2	3
6	Liverpool Feds	2	1	0	1	5	5	0	0	0	0	0	1	0	1	5	5	0	3
7	West Bromwich Albion	2	1	0	1	4	5	0	0	0	0	0	1	0	1	4	5	-1	3
8	Huddersfield Town	2	1	0	0	4	2	0	0	1	0	4	1	0	1	4	6	-2	3
9	Halifax	1	0	1	0	3	3	0	0	0	0	0	0	1	0	3	3	0	1
10	Stourbridge	2	0	0	0	0	0	0	1	1	3	10	0	1	1	3	10	-7	1
11	Derby County	2	0	0	1	1	2	0	0	1	2	3	0	0	2	3	5	-2	0
12	AFC Fylde	2	0	0	1	0	4	0	0	1	2	4	0	0	2	2	8	-6	0

PLAYER STATS 2023/24

#	Name	League		WFA Cup		Lge Cup		BCC		2023-24		Wolves Total	
		apps	gls	apps	gls	apps	gls	apps	gls	apps	gls	apps	gls
1	Shannon Turner	2	0	0	0	1	0	0	0	3	0	52	0
2	Ellie Wilson	2	1	0	0	1	1	0	0	3	2	3	2
3	Anna Morphet	2	1	0	0	1	1	0	0	3	2	112	40
4	Anna Price	0	0	0	0	0	0	0	0	0	0	356	65
5	Emma Cross	0+1	0	0	0	1	0	0	0	1+1	0	231	3
7	Tammi George	2	0	0	0	1	2	0	0	3	2	108	31
8	Merrick Will	2	0	0	0	1	0	0	0	3	0	3	0
9	Jade Cross	0+2	0	0	0	1	0	0	0	1+2	0	237	162
10	Helen Dermody	2	0	0	0	0+1	0	0	0	2+1	0	53	8
11	Amber Hughes	2	1	0	0	1	3	0	0	3	4	53	49
13	Bec Thomas	0	0	0	0	0	0	0	0	0	0	82	0
14	Amy Dicken	0+1	0	0	0	0+1	0	0	0	0+2	0	65	16
15	Kelly Darby	0	0	0	0	0	0	0	0	0	0	42	5
16	Summer Holmes	0	0	0	0	0	0	0	0	0	0	67	2
17	Katie Johnson	2	0	0	0	0+1	0	0	0	2+1	0	41	7
18	Hannah Fryer	0	0	0	0	1	1	0	0	1	1	1	1
19	Olivia Fergusson	0+2	0	0	0	1	0	0	0	1+2	0	3	0
21	Destiney Toussaint	2	0	0	0	0+1	2	0	0	2+1	2	28	18
22	Beth Roberts	2	0	0	0	0+1	0	0	0	2+1	0	16	3
23	Josie Smith	0	0	0	0	0	0	0	0	0	0	6	0
25	Sophie Bramford	0	0	0	0	0	0	0	0	0	0	19	7
28	Beth Merrick	2	0	0	0	1	1	0	0	3	1	72	26

All stats correct at time of going to print.

DERBY COUNTY 1

(Sutherland 59)

WOLVES WOMEN 2

(Wilson 14, Hughes 36)

TEAM | Turner, Wilson (E. Cross 80), Morphet, George, Will, Dermody (Fergusson 70), Johnson, Toussaint (Dickens 90+1), Roberts, Merrick, Hughes (J Cross 87). Subs not used | Fryer.



“At times it was hard because Derby are a good team and they’ll take points off people, but we got the three points so I’m happy with the performance from the girls.”

Amber Hughes



WOLVES WOMEN 11

(Fryer 18, George 48, 62, Toussaint 60, 88, Hughes 66, 76, 90+3, Morphet pen 68, Wilson 73, Merrick 85)

DONNY BELLES 1

(Tugby-Andrew 52)

TEAM | Turner, Wilson, Morphet (Johnson 70), E. Cross, Fryer (Roberts 58), Will (Dermody 58), J. Cross (Toussaint 58), Hughes, George (Dickens 70), Fergusson, Merrick.



“I don’t think it was Amber’s finest hat-trick, but she’ll tell you as a centre forward that goals are goals.”

Dan McNamara



19

OLIVIA FERGUSSON

**Joining from Celtic,
forward Liv was
Wolves' first summer
signing of 2023.**

The former England under-17 international has Women's Super League and Championship experience, having previously represented Aston Villa, Bristol City, Yeovil Town, Sheffield United, Leicester City and Coventry United.

WE ARE WOLVES





After winning the Women's National League's Northern Premier Division in 2021/22 but then missing out on promotion through a play-off defeat to Southampton, Wolves were pipped to the Northern Premier title on goal difference by Nottingham Forest last term. Winning the Birmingham County Cup in both seasons was consolation but could not erase the heartache and frustration of Dan McNamara's team.

Just as in recent years, there have been highs and lows for the women's club since its formation in 1975 as Heathfield Rovers. Initially a West Midlands League second division club, they later became Wolverhampton & Wednesbury Tube and then Wolverhampton Ladies before taking the name Wolverhampton Wanderers in 1993.

That final name switch was a good omen as the 1993/94 season saw them promoted to the Premier League – which was then the top flight of the English women's game – where they spent two seasons before relegation.

In 1999 the club was incorporated under the Companies Act with several influential business people joining the board, among them BBC presenter Jenny Wilkes (Chair) and former England Women's cricket team captain Baroness Rachael Heyhoe Flint.

The club evolved a strong youth development programme, several players going on to become senior internationals – Rachel Unitt, Jody Handley and Emily Westwood for England, Kerrie Manley for Wales and Amy McCann for Northern Ireland.

Aston Villa's European Cup-winning captain Dennis Mortimer was appointed manager in 2000 and led the team for three years, narrowly missing out on promotion.

In a landmark move in the 2008/09 season the women's section was taken on board by Wolverhampton Wanderers FC as part of Wolves Community Trust.

Recent seasons have seen the club promoted three times and relegated twice, managers James Astle, Tim Dudding and McNamara leading successful campaigns.

At junior level the club was awarded a new FA Girls' Regional Talent Club licence in 2016, supporting the

identification and development of players with elite potential as part of the England Talent Pathway.

Encouragingly, the RTC has seen some talented young players moving through the ranks and making their mark at senior level.

Current first team manager McNamara took over at the beginning of 2018 after a poor start to the season and led the battle to avoid the drop, but after a hard-fought campaign relegation was confirmed – agonisingly on goal difference.

There was further disappointment in the following two seasons, firstly as McNamara's team finished runners-up and so missed out on promotion and then, in 2019/20, having promotion snatched away as they had all but clinched top place when the season was null and voided due to the coronavirus pandemic.

2020/21 looked like déjà vu as, once again, Wolves were riding high only to have another pandemic-enforced end to the campaign. But a deserved promotion was eventually achieved via the FA's 'upward movement' initiative, so ending the team's three-year break from the Northern Premier Division.



WOLVES WOMEN A BRIEF HISTORY

By Tony Leighton

Following two 'so near yet so far' seasons, Wolves Women are determined to make 2023/24 the club's most successful campaign of the 21st century.

And what a 2021/22 season it was. The divisional title was clinched with three matches remaining and the County Cup was lifted with a 4-1 victory in the final over local rivals West Bromwich Albion. Then came the devastating promotion play-off defeat; and 12 months later the heartbreak of missing

out again on clinching the title.

Now, as McNamara, his players and staff look to produce a 2023/24 campaign to top their achievements of the last two seasons, they continue to play their home games at Telford United's impressive New Bucks Head Stadium which has a crowd capacity of 5,500.

The women's and girls' set up is fully integrated into Wolverhampton Wanderers Academy, under the leadership of Head of Women's and Girls' Football, Jenna Burke-Martin, and a new FA Emerging Talent Centre forms the base of the female player pathway.

Players benefit from the use of the club's top class Compton training ground facilities – including sports science, analysis and physiotherapy – as part of Wolves' 'one club' ethos.

TONIGHT'S OPPONENTS:

STOURBRIDGE FC WOMEN



Stourbridge FC Women were formed in 2012, initially known as Stourbridge Ladies and playing in the Birmingham County League Division Two. Three rapid promotions saw the Glassgirls join the West Midlands Regional League in 2016, having finished as runners-up in the County League in 2015/16, as well as winning the league's Open Cup in the same season.

Mid-table finishes in the first three seasons in WMRL Division 1 South were followed by a stunning 2019/20 season in which the team won all 14 of their league matches before the campaign was curtailed due to the pandemic. No fewer than 95 goals were scored and just two conceded in that campaign, and the League Cup semi-final was also reached - but never played.

The 2020/21 season saw the team win their opening three league fixtures before lockdown again brought things to an early end, but the autumn was dominated by a thrilling Vitality Women's FA Cup run, taking in six rounds. Port Vale, Wyrley, Knowle, Worcester City and Crusaders were all beaten before Wolves ended Stourbridge's run.

Despite two abandoned seasons, the summer of 2021 brought good news as Stourbridge were successful in achieving promotion via the FA's 'upward movement' initiative to the WMRL Premier Division at Tier 5.

Their first campaign at that level was a phenomenally successful one, winning the league title by 10 points and suffering just one defeat all season, scoring 123 goals and

conceding just eight. The Glassgirls also enjoyed huge cup success, winning the WMRL Premier Division Cup as well as reaching the semi-finals of the Birmingham County Cup for the first time, and the third round of the Vitality Women's FA Cup, losing 0-3 at home to FA Women's Championship side Sheffield United in front of a record crowd of over 400 at the War Memorial Ground.

A second consecutive promotion meant that 2022/23 would see FA Women's National League football for the first time in the club's history, a remarkable achievement in such a short time span, with the team also rebranded as Stourbridge Women ahead of their fresh challenge.

Whilst ambitions at the start of the campaign were understated, the team once again took almost everyone by surprise, brushing aside an opening day defeat to go on a 19-match winning run which saw the Division 1 Midlands Title secured with two games to spare. 86 goals were scored (the joint highest across the entire National League) and only 16 conceded as Stourbridge ended the season as champions by a staggering 12-point margin.

Cup competitions saw more success as the team reached the finals of both the FA WNL Plate and Birmingham FA County Cup, and despite both ending in defeat to Leeds United and Wolves respectively, they helped to establish Stourbridge as a name to be reckoned with as they embark on yet another new venture in the FA WNL Northern Premier Division in 2023/24.



JT's Pic of the Week

DATE

Sunday 27th August 2023

LOCATION

Sir Jack Hayward Training Ground

Plenty of goals from this one, as Ellie Wilson celebrates one of the team's 11 goals at Compton as they beat Doncaster Rovers Belles. Lucky for me I was in the right place at the right time as Ellie celebrated her goal after Beth Roberts served a cross on a platter!

England will bounce back to glory from the heartache of losing the Women's World Cup final, insists Rachel Unitt as the former Wolves and Lionesses player forecasts future gold medals for Sarina Wiegman's Euro 2022 winners.

Unitt herself, who won 102 international caps after leaving Wolves for Everton, knows all about World Cup woes having been part of the England squad that went out at the quarter-final stage of both the 2007 and 2011 World Cups.

"It was a horrible feeling going out of those tournaments," says the Walsall-born left back, "especially in 2011 when we lost on penalties to France after we'd been in the lead with only a few minutes of the game left.

"But to lose out at the final hurdle in Australia this time round was obviously total devastation for the girls, who'd done so well to get that far and probably went into the game as slight favourites against a very good Spain team.

"They'd beaten Spain in a really tough quarter-final on the way to winning last year's Euros, so they were confident that they could do it again to make it two major tournament gold medals in 12 months.

"But sadly it wasn't to be. In the first half especially Spain were absolutely dominant. We couldn't get close to them, we couldn't break their press; I think we got it wrong tactically in that first half and it was frustrating to watch.

"It might have been a different match if Lauren Hemp's first half shot that hit the bar had gone into the net, and we were definitely better in the second half. But overall I think that Spain deserved to win the game."

Defeated but unbowed, England are now set to turn their attention to the inaugural UEFA Women's Nations League, which starts the qualifying process for Euro 2025 – where the Lionesses, if they qualify, will be defending champions.

England's Nations League group opponents are the Netherlands, Belgium and Scotland, with the opening fixtures against the Scots at Sunderland's Stadium of Light on 22nd September and, four days later, the Netherlands in Utrecht.

Qualification through the Nations League is also up for grabs for the 2024 Olympic Games, ahead of which England players would be selected as part of a Team GB squad that would head to Paris for the Games.

It's a big double whammy of opportunities and Unitt, who missed out on Team GB selection for the 2012 Olympics in England due to injury, is backing the Lionesses to reach both of the major tournaments and to prosper in each.

"I've got absolute confidence in this England team to come back strongly from the World Cup disappointment," she says. "Considering we had three big players missing through injury in Australia, we've got a very, very strong squad.

"The girls who were out there should be super-proud of their achievements over the last couple of years. They've proved they're up there with the best teams in the world and I can definitely see us winning more trophies in the future.

"With the oldest players in the starting line-up (Lucy Bronze and Rachel Daly) only 31, we could have more or less the same squad going into the next Euros and World Cup – and definitely as part

of Team GB if we make the Olympics.

"We've obviously got to qualify first for all three tournaments, but I'm certain we can do that. And with Sarina Wiegman, who's one of the world's best coaches, in charge we can get at least one gold medal to bring home."

*By Tony Leighton.
Images courtesy of The FA via Getty Images.*

Rachel Unitt

"They've proved they're up there with the best teams in the world and I can definitely see us winning more trophies in the future."



Fixtures, Results & Line-ups 2023/24

- FAWNL
- Vitality WFA Cup
- League Cup
- Birmingham County Cup
- Red – 1st sub
- Green – 2nd sub
- Blue – 3rd sub
- Purple – 4th sub
- Bold fixture – Home fixture
- # – Goal scored
- – Penalty scored
- + – Own goal
- Yellow card
- Red card

DATE	OPPOSITION	RES/KO	POS	ATT	REFEREE											SUBSTITUTES					
AUGUST						Turner	Wilson 1	Roberts	Johnson	Morphet	George	Will	Dermody	Merrick	Toussaint	Hughes 1	Fergusson	E Cross	J Cross	Dicken	Fryer
20	Derby County	W 2-1	5	392	J Shepherd	Turner	Wilson 1	Fryer 1	E Cross	Morphet 1	George 2	Will	Fergusson	Merrick 1	J Cross	Hughes 3	Roberts	Dermody	Toussaint 2	Johnson	Dicken
27	Doncaster Rovers Belles	W 11-1	-	200	L Whiteman																
September						Turner	Wilson	Roberts	Johnson	Morphet 1	George	Will	Dermody	Merrick	Toussaint	Hughes	Fergusson	J Cross	Fryer	E Cross	Dicken
3	Burnley	D 1-1	3	-	D McCall																
6	Stourbridge	7:45pm																			
17	Stoke City	2:00pm																			
24	AFC Fylde	2:00pm																			
October																					
1	(League Cup 1st Round)																				
8	Huddersfield Town	2:00pm																			
15	Newcastle United	2:00pm																			
22	West Bromwich Albion	2:00pm																			
29	(League Cup 2nd Round)																				
November																					
5	Nottingham Forest	2:00pm																			
12	(Vitality WFA Cup 1st Round)																				
19	(Birmingham County Cup)																				
26	(Vitality WFA Cup 2nd Round)																				
December																					
3	Liverpool Feds	2:00pm																			
10	(Vitality WFA Cup 3rd Round)																				
17	(Birmingham County Cup)																				
January																					
7	Burnley	2:00pm																			
14	Halifax Town	2:00pm																			
21	(Birmingham County Cup)																				
28	Stoke City	2:00pm																			
February																					
4	Newcastle United	2:00pm																			
11	AFC Fylde	2:00pm																			
18	(Birmingham County Cup)																				
21	Stourbridge	7:45pm																			
March																					
10	Nottingham Forest	2:00pm																			
17	(Birmingham County Cup)																				
24	West Bromwich Albion	2:00pm																			
31	Huddersfield Town	2:00pm																			
April																					
21	Derby County	2:00pm																			
May																					
5	Liverpool Feds	2:00pm																			



Your support is greatly appreciated!

Admission to Wolves Women games at the New Bucks Head is free for Wolves and Telford United season ticket holders.

For non season-ticket holders, tickets can be bought online in advance from the Telford United website for a reduced price of £5 for adults, £4 for concessions and £1 for 3-16s.

Payment is also accepted on the gate via card or cash with entry costing £6 for adults and £5 for concessions.

To see our fixtures please scan the QR code or visit wolves.co.uk/fixtures/womens-first-team





1	Shan Turner	<input type="checkbox"/>	1	Jamie-Lee Bamford	<input type="checkbox"/>
2	Ellie Wilson	<input type="checkbox"/>	2	Zoe Clarke	<input type="checkbox"/>
3	Anna Morphet	<input type="checkbox"/>	3	Jess Bate	<input type="checkbox"/>
4	Anna Price	<input type="checkbox"/>	4	Lexie Harrison	<input type="checkbox"/>
5	Emma Cross	<input type="checkbox"/>	5	Sophie Levick	<input type="checkbox"/>
7	Tammi George	<input type="checkbox"/>	6	Alex Nicklin	<input type="checkbox"/>
8	Merrick Will	<input type="checkbox"/>	7	Lauren Da'Casto	<input type="checkbox"/>
9	Jade Cross	<input type="checkbox"/>	8	Courtney Murphy	<input type="checkbox"/>
10	Helen Dermody	<input type="checkbox"/>	9	Niamh Deasy	<input type="checkbox"/>
11	Amber Hughes	<input type="checkbox"/>	10	Mill Rogers	<input type="checkbox"/>
13	Bec Thomas	<input type="checkbox"/>	11	Esme Moran	<input type="checkbox"/>
14	Amy Dicken	<input type="checkbox"/>	12	Sophie Heaselgrave	<input type="checkbox"/>
15	Kelly Darby	<input type="checkbox"/>	14	Meg Hadley	<input type="checkbox"/>
16	Summer Holmes	<input type="checkbox"/>	15	Jess Lowe	<input type="checkbox"/>
17	Katie Johnson	<input type="checkbox"/>	16	Ellie McGovern	<input type="checkbox"/>
18	Hannah Fryer	<input type="checkbox"/>	17	Hannah Fishwick	<input type="checkbox"/>
19	Olivia Fergusson	<input type="checkbox"/>	18	Lois Jefferies	<input type="checkbox"/>
21	Destiney Toussaint	<input type="checkbox"/>	19	Niamh Murphy	<input type="checkbox"/>
22	Beth Roberts	<input type="checkbox"/>	20	Rosie Embley	<input type="checkbox"/>
23	Josie Smith	<input type="checkbox"/>	23	Amber Lawrence	<input type="checkbox"/>
25	Sophie Bramford	<input type="checkbox"/>	28	Favour Omenazu	<input type="checkbox"/>
38	Beth Merrick	<input type="checkbox"/>			

MATCH OFFICIALS

Referee Nigel Bamford
Assistant referees David White & Christopher Whinyates

NEXT AT THE NEW BUCKS HEAD

AFC Fylde
Sunday 24th September, 2.00pm
FA WNL

