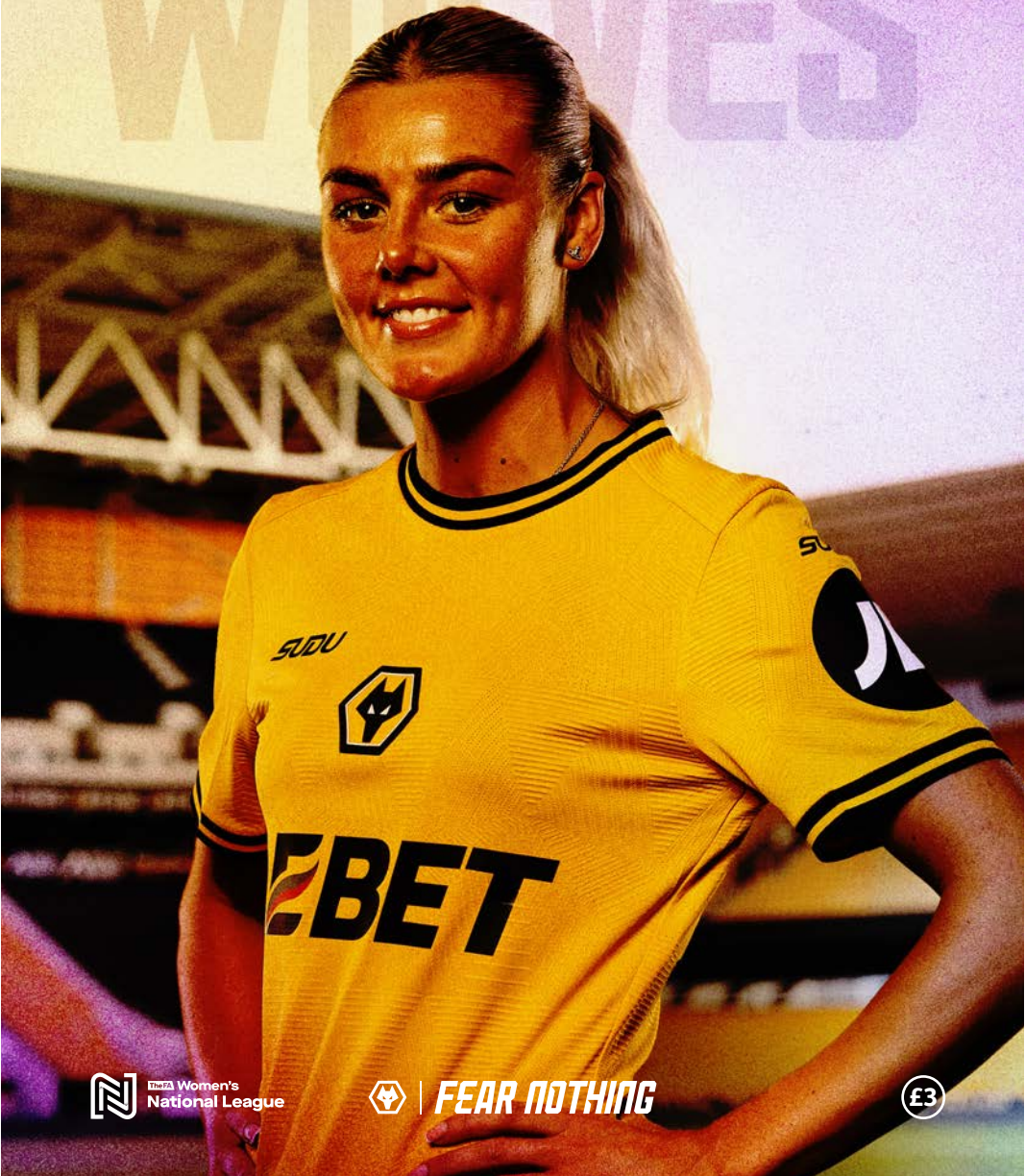




WOLVES V DERBY COUNTY
SEAH STADIUM | SUNDAY 26TH JANUARY 2025

WOLVES



CONTENTS:

- 1 Tammi George
- 3 Dan McNamara
- 4 Match action
- 8 One Pack, One Planet
- 10 Summer Holmes
- 12 Old Gold'uns – Dani Selmes
- 14 Derby County
- 15 League table & player stats
- 16 Latest news
- 18 Stat Pack

PROGRAMME TEAM

Mike Capewell, Tony Leighton,
James Orotayo, Jack Thomas,
Luke Turner, Jenny Wilkes,
Synaxis Design Consultancy

Printed by
Purcell Branding



Welcome back to the SEAH Stadium. It's great to be back here after what seems like a long time since our WFA Cup win over Shrewsbury in December. A lot has happened since then.

It was a disappointing end to the year, going out of the Challenge Cup to Albion on penalties, but we got what we deserved. It was the end of our great run of 11 wins against them, but I'm delighted we'll have the chance to start that run again when we play them in March in the league at Molineux. It's always special to play on the Molineux turf - especially in a Black Country derby, and we're all looking forward to that one.

I'm delighted with how well we've started 2025. It was difficult coming back after three weeks without a game, but we made sure we kept our fitness up with regular training sessions and friendlies over the Christmas break. We were also delighted to get Amber back from her calf injury, and that's credit to Christos, Nathan and the medical department for all their hard work.

That FA Cup win over Cheltenham Town can't be underestimated. We knew it would be tough going there, but we stuck to our task and Amber and Beth Merrick scored a couple of special goals to take us to the fifth round for the second season in a row. That has set up an amazing home tie against the holders, Manchester United.

We can't wait to host them here at Telford. We know it's going to be a massive challenge, but the players really want to test themselves against the best. These are the sort of games we love, and we know our fans can play a big part in that too - just like against Brighton last season. I'm always talking about making memories and I want everyone to embrace it and make it a special day to be proud of.

But we're not getting ahead of ourselves. Before that we have two tough league games, starting with today. The girls have defied the odds to be just a point off the top of the table halfway through the season and we have to keep our focus. We did that last week at Stourbridge. Amber and Charlotte scored seven goals between them - the connection between the two of them now is phenomenal, and we were delighted to get Summer back on the pitch, as well as Abbi Jenner who's been out with a bit of a niggle.

Today promises to be a tough day with Derby always a hard-fought contest. I know Sam will have them well organised but if we are to keep the pressure on at the top of the table we must give our all to get three points.

I hope to hear you all loud and proud and hopefully get the players over the line.

Dan McNamara
Manager



**FEAR
NOTHING®**

**PURCELL
BRANDING**
GRAPHICS / SIGNAGE / INTERIORS / EVENTS

**MAKING YOUR BRAND
STAND OUT FROM
THE CROWD**

OFFICIAL PRINT PARTNER TO **Wolves**

hello@purcellbranding @purcellbranding @purcellbranding



“I think the most disappointing thing is that although we showed a lot of fight and a lot of heart to get back into the game, we should’ve probably had a bit more control of the game and showed more of our qualities.”

~ Anna Morphet

TEAM
 Clarke
 Morphet
 George (Loydon 63)
 J. Cross (Denham 63)
 Greengrass
 Johnson
 Anderson
 Toussaint
 Roberts
 Jenner
 Merrick (Quigley 53)

Subs not used:
 Fryer, Hiscox

BIRMINGHAM CHALLENGE CUP / QUARTER-FINAL

WEST BROMWICH ALBION WOMEN 1

V WOLVES 1

GOALSCORER:
 Warner 72

GOALSCORER:
 Greengrass 77

(4-2 ON PENALTIES)

Sunday 15th December **KO 3pm**

Adobe **WFA CUP**

CHELTEPHAM TOWN 0

V WOLVES 2

GOALSCORERS: Hughes 62, Merrick 71

Sunday 12th January

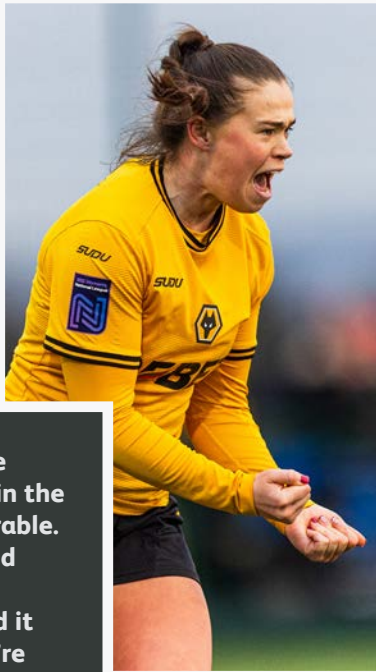
KO 2pm

TEAM
 Thomas
 Morphet
 George
 Hughes (Denham 94)
 Greengrass (Quigley 90)
 Johnson
 Anderson
 Toussaint (J. Cross 78)
 Roberts
 Smith
 Merrick (Hiscox 78)

Subs not used:
 Clarke, E. Cross, Loydon,
 Holmes, MacPhail

“Any sort of game that we can get in the FA Cup is memorable. We’ve always said about making memories, we did it last year and we’re certainly going to try and do the exact same thing again.”

~ Beth Merrick



Waterstones Wolverhampton is proud to be the official bookseller for Wolverhampton Literature Festival 2025.

See wolveslitfest.co.uk for the full range of brilliant events across the city.



ONJALI Q. RAUF
Sat 1 Feb • 11am
Central Library



ASHLEY JOHN BAPTISTE
Sat 1 Feb • 3pm
Wolverhampton Art Gallery



MARK BILLINGHAM
Sun 2 Feb • 4:30pm
Wolverhampton Art Gallery

CITY OF WOLVERHAMPTON

WOLVERHAMPTON LITERATURE FESTIVAL



FRI 31 JAN - SUN 2 FEB 2025

wolveslitfest.co.uk | 01902 552055

CITY OF WOLVERHAMPTON COUNCIL
WOLVERHAMPTON ARTS COUNCIL ENGLAND



AL MURRAY
Fri 31 Jan • 1pm
Wolverhampton Art Gallery



SHAPARAK KHORSANDI
Sun 2 Feb • 8pm
Bilston Town Hall



JORDAN STEPHENS
Sat 1 Feb • 7:30pm
Wolverhampton Art Gallery



Waterstones

Waterstones
13-15 Victoria Street
Wolverhampton
WV1 3NP
01902 427219

MANDER CENTRE

STOURBRIDGE 2 V WOLVES 7

GOALSCORERS:
Horgan 38 Ashfield 62

GOALSCORER:
Hughes 17, 22, 51, 57, Greengrass 28, 33, 90+5

Sunday 19th January

KO 2pm

TEAM

- Thomas
- Morphet (Jenner 58)
- George (Holmes 58)
- Hughes (Quigley 68)
- Greengrass
- Johnson
- Anderson (Loydon 58)
- Toussaint
- Roberts (Denham 65)
- Smith
- Merrick

“I’m always glad to get on the scoresheet, but I can’t do it without my teammates. I thought they were brilliant, we’ve all played our part.”

~ Amber Hughes



Subs not used:

- Clarke, J. Cross, Hiscox





One Pack, One Planet.

Wolves have published their annual environmental sustainability report, marking the second anniversary of the club's 'One Pack, One Planet' programme.

Launched in February 2023, it sets out the club's ambition to lead the way in environmental sustainability, maximising our positive pawprint in the city of Wolverhampton and globally.

It features four headline commitments, which are...

Carbon

We will work towards becoming a net-zero football club by 2040.

Waste

We will embrace a circular economy, minimising waste and maximising reuse.

Nature

We will protect our natural environment and support a wilder future.

Culture

We'll embed environmental sustainability across the club, while engaging, educating and communicating around sustainability.

Now, two years on from the launch of One Pack, One Planet, this report celebrates the campaign's second anniversary, highlighting our sustainability progress throughout 2024 and reinforcing the club's ongoing commitment to environmental sustainability.

Visit wolves.co.uk to read the full report.



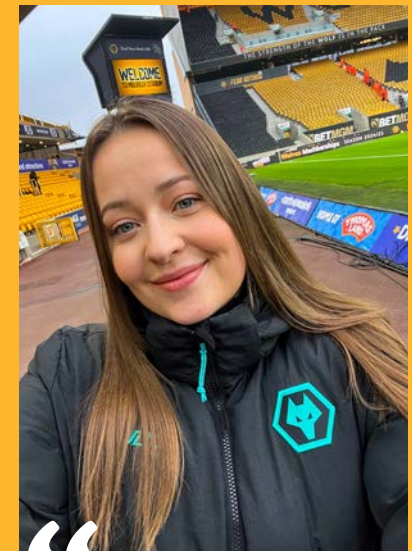
One Pack, One Planet ambassadors...



I'm always looking to learn more about what I can do individually as well as how I can use my platform to raise more awareness for climate action. I've recently started using a bike to travel with, which hopefully is a small step in the right direction to being more environmentally friendly, reducing my carbon footprint and helping others do the same!

I'm excited to become a new One Pack, One Planet ambassador to help play my part in the club's sustainability efforts."

Merrick Will
Women's first-team player and
Academy operations officer



Sustainability is something I've always been passionate about. I cut meat out of my diet several years ago, and I choose to walk and travel by public transport instead of driving, including on matchdays.

I'm proud to be a One Pack, One Planet ambassador and do my bit to make my club as green as it can be!"

Gemma Frith
Presenter/producer



SUMMER HOLMES

WOLVES | FEAR NOTHING

As we welcome Derby County to the SEAH Stadium this afternoon, former Wolves striker Dani Selmes remembers some of the first tussles we had with the Rams during her six goal-filled years in Old Gold.

Selmes joined the club from Aston Villa in 2009 as we were fighting to regain our place in the FA Women's Premier League's Northern Division following our relegation to the Midland Combination at the end of the 2006/07 campaign.

Meanwhile Derby, for the first time in their history, were promoted to the Northern Division in 2009 and so had spent three seasons in the league before we regained our place after winning the Combination in 2011/12.

So our first league meetings with the Rams were in 2012/13, Selmes hitting the ground running with 11 goals in her first nine outings and finding the net 20 times in all competitions – including scoring both home and away as we did the double over today's visitors.

"I loved that first season back in the Northern Division with Wolves," said Selmes as she looked back at her football career.

"It was tough at times and always a challenge against teams like Derby. They were strong, they were set up well and very competitive.

"We were quite evenly matched, so it was nice to beat them home and away and I think we finished just above them in the table."

Wolves in fact finished seventh and Derby eighth, the season ending with a double-completing 3-2 home win against the Rams; but then the 2013/14 campaign starting with a 5-3 away defeat.

Revenge was gained towards the end of the season, when two Selmes penalties proved decisive in a 3-0 victory.

"As a striker I was always happy to take penalties," said Selmes, "but I was not so happy when I had to take two in the same match. It was always, 'shall I put it the same way, or the other way?' Thankfully in that game I took the right decision."

The two clubs' final league positions were reversed in that campaign, Derby finishing seventh and Wolves eighth. Selmes hit the net 23 times in all competitions to take her impressive five-season goal haul to 118 – never once failing to hit her target of 20.

And even in the disastrous season which followed, when Wolves finished bottom and were relegated (Derby did the double over us and ended in sixth place), she scored 15 goals before leaving the club to join Coventry United in January 2015.

"We were unlucky with injuries that season," recalled Selmes, "it was a downturn for the club. When Coventry showed interest in signing me I decided to take on a new challenge, but I'd really enjoyed my time at Wolves.

"When I was at Villa I lost my love for the game a bit, but I knew a Wolves player or two and when I had a couple of training sessions with the team I got on really well with the girls and felt at home straight away.

"At Villa I was used as a winger and wanted to play as a number nine, so it was great to be up top in a 4-5-1 at Wolves – and thanks to the service I got from the players around me, I got a fair few goals."



Old Gold'uns

by Tony Leighton



Derby County Women

Derby County Women was formed in 1990 and since then has grown organically from just one senior team to be the largest girls' and women's club in the Derbyshire area, with teams at every age level from Under-8s upwards.

In 2014 they were named Charter Standard Development Club of the Year by the Derbyshire County FA and in 2015 and 2018 became FA Women's Premier League Club of the Year.

It was in 2008/9 that the first team completed a league & cup double to win the Midland Combination League and gain promotion to the FA Women's Premier League for the first time in their history.

Derby County have had top four finishes in the newly-branded FA Women's National League Northern Premier Division since its launch, with their best position being in 2021/22 when they narrowly missed out on top place, finishing second behind Wolves.

Sam Griffiths became head coach in 2018/19 after a long association as a player.

In 2021 the club became a stakeholder in Mickleover FC, giving them a permanent home and where they now play their home games.

The club makes excellent provision for junior players to move through the ranks to open age football with a number of the current senior squad starting their Derby County careers in the academy, now called the Female Talent Pathway, FTP.

Every team within the club has a partner rather than a sponsor, and the relationships they have with these partners saw them through a difficult period when the men's club went into administration recently. However, the new owners have stabilised the club and brought the women's arm under the Derby County umbrella, now firmly operating a ONECLUB approach.

The women's team have their own hub and access to the excellent facilities at the Category A training ground at Moor Farm, and this closer association with the men's club has led to the women's team playing some fixtures at Pride Park.

Derby County Women have maintained a strong link with the University of Derby and use the support of students from a varied list of disciplines including sports science, analysis, marketing and media. This year they were pleased and proud to announce the university as the main front of shirt sponsor.

LEAGUE TABLE 2024/25

Pos Team	P	HOME					AWAY					TOTAL					GD PTS	
		W	D	L	F	A	W	D	L	F	A	W	D	L	F	A		
1 Nottingham Forest	12	4	1	0	29	1	6	1	0	19	3	10	2	0	48	4	44	32
2 Wolverhampton Wanderers	12	4	0	1	17	6	6	1	0	27	8	10	1	1	44	14	30	31
3 Burnley	10	3	0	1	12	1	5	1	0	16	5	8	1	1	28	6	22	25
4 Stoke City	12	3	1	2	15	10	5	0	1	17	7	8	1	3	32	17	15	25
5 Rugby Borough	11	4	1	1	15	4	3	1	1	20	3	7	2	2	35	7	28	23
6 Liverpool Feds	11	2	2	3	10	13	3	0	1	13	5	5	2	4	23	18	5	17
7 Derby County	12	2	1	4	9	15	2	1	2	8	9	4	2	6	17	24	-7	14
8 West Bromwich Albion	12	3	0	3	13	15	1	1	4	6	11	4	1	7	19	26	-7	13
9 Hull City	13	1	0	5	6	16	2	0	5	8	27	3	0	10	14	43	-29	9
10 Sporting Khalsa	13	2	0	5	15	19	0	1	5	2	24	2	1	10	17	43	-26	7
11 Stourbridge	11	1	0	4	7	17	1	0	5	3	23	2	0	9	10	40	-30	6
12 Halifax	11	0	1	5	3	24	0	0	5	2	26	0	1	10	5	50	-45	1

PLAYER STATS 2024/25

#	Name	League		WFA Cup		Lge Cup		BCC		2024-25		Wolves Total	
		apps	gls	apps	gls	apps	gls	apps	gls	apps	gls	apps	gls
3	Anna Morphet	11	2	4	1	2	1	2	0	19	4	160	51
4	Summer Holmes	3+1	0			1	0			4+1	0	87	3
5	Emma Cross			1	0	1+1	0			2+1	0	252	3
7	Tammi George	12	4	4	4	0+1	0	2	2	18+1	10	156	51
8	Merrick Will											23	1
9	Jade Cross	3+8	1	2+2	3	3	0	1+1	1	9+11	5	285	174
10	Abi Loydon	1+9	0	1+2	1	3	1	0+2	0	5+13	2	18	2
11	Amber Hughes	11	15	2	3	1+1	0	1	3	15+1	21	94	88
12	Charlotte Greengrass	12	11	3+1	6	1+2	1	2	3	18+3	21	21	21
13	Bec Thomas	12	0	4	0	1	0			17	0	122	0
14	Martha MacPhail	0+1	0			1	0			1+1	0	2	0
15	Layla Banaras	1+4	0	0+1	0	2	0			3+5	0	18	0
16	Racheal Quigley	0+5	3	1+1	2	0+1	0	0+1		1+8	5	9	5
17	Katie Johnson	12	1	4	0	1+2	0	1		18+2	1	90	9
18	Hannah Fryer	1+2	0	1	0	3	0	1	1	6+2	1	31	2
19	Becky Anderson	10+1	0	3	1	2+1	0	2	0	17+2	1	19	1
20	Ania Denham	0+7	2	0+3	2	3	0	0+2	0	3+12	4	23	5
21	Destiney Toussaint	9+1	0	3+1	3	0+1	0	2	3	14+3	6	62	30
22	Beth Roberts	12	0	3	0	2	0	2	0	19	0	62	5
23	Josie Smith	3+3	0	1+2	0	1	0			5+5	0	18	0
25	Amelia Hiscox	0+1	0	1+3	0	0+2	0	0+1	0	1+7	0	9	0
26	Madison Calder			0+2	0			0+1	2	0+3	2	3	2
27	Abbi Jenner	10+1	0	2	0	2+1	0	2	1	16+2	1	18	1
28	Beth Merrick	9+1	4	4	5	1+1	2	2	1	16+2	12	120	48
30	Charlotte Clarke					2	0	2	0	4	0	4	0
31	Skye Owen											4	0
39	Sophie Woodward			0+1						0+1	0	1	0

All stats correct at time of going to print.

And in Other News...

Congratulations to Charlotte Greengrass who was named Player of the Match after scoring five goals in Wolves' 14-0 WFA Cup win over Shrewsbury Town in December. The award, sponsored by Purcell Branding, was presented by Wolves director John Bowater.

And congratulations to Sophie Woodward who made her senior debut in the same game, coming on in the second half to replace Destiney Toussaint.

Welcome back to Summer Holmes and Martha McPhail who were both back on the bench for the Cheltenham Town WFA Cup game after returning from injury, with Summer also back on the pitch as a substitute in last week's win at Stourbridge.

Congratulations to Sareet Binning who's been called up to the England Under-16s training camp next month and to Beth Marriott who attended an England Colleges training camp.

Fixture update

Next Sunday 2nd February sees Wolves travel to Rugby to take on fifth-placed Rugby Borough. The game will be played at the Nationwide Windows Arena, Rugby, CV21 4PN with a 2pm kick-off.

Wolves' impressive WFA Cup run has earned them a mouth-watering fifth round home tie against Women's Super League side and current WFA Cup-holders Manchester United. The game will be played here at the SEAH Stadium during the weekend of Sunday 9th February.

That's closely followed on Wednesday 12th February by a home league game under the lights against Sporting Khalsa with a 7.45pm kick-off.

Meanwhile, our home league game against West Bromwich Albion on Sunday 23rd March will be played at Molineux with a 3pm kick-off. Tickets are on sale now via the Wolves website with prices ranging from £3 to £7.



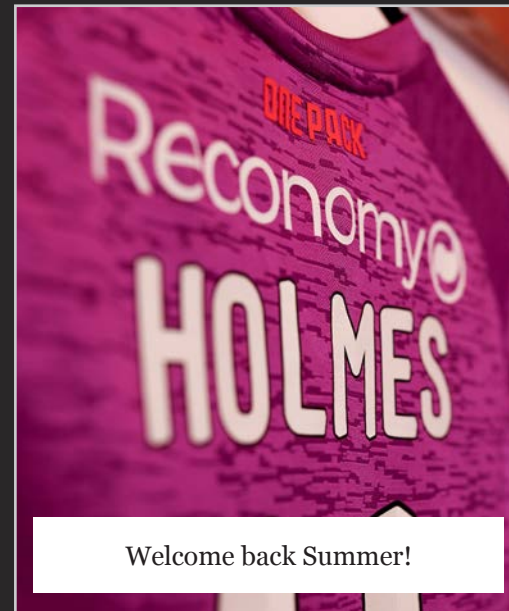
Congratulations Sophie!



Well played Charlotte!



FEAR NOTHING



Welcome back Summer!



Congratulations Sareet!

	FAWNL	Name	1st sub	TEAM	Home fixture	+	Own goal
	Adobe WFA Cup	Name	2nd sub	Team	Away fixture	!	Yellow card
	League Cup/Plate	Name	3rd sub	#	Goal scored	!	Red card
	B'ham Challenge Cup	Name	4th sub	!	Penalty scored		
		Name	5th sub				

DATE	OPPOSITION	RES/KO	POS	ATT	REFEREE											SUBSTITUTES							
AUGUST																							
18	STOURBRIDGE	W 4-0	3	407	S Anderson	Thomas	Johnson	Roberts	Morphet	Jenner	Holmes	Loydon	George 1	J Cross	Greengrass 1	Hughes 1	Smith	Hiscox	MacPhail	Denham 1	Fryer	Elbro	Banaras
25	Derby County	W 2-1	4	338	A Greenwood	Thomas	Johnson 1	Roberts	Morphet 1	Jenner	Holmes	Smith	George	J Cross	Greengrass	Anderson	Loydon	Elbro	Fryer	E Cross	MacPhail	Banaras	Denham
28	STOKE CITY	L 1-3	-	297	D Chappell	Thomas	Fryer	Roberts	Morphet	MacPhail	Holmes	Loydon	Smith	J Cross	Greengrass 1	Denham	E Cross	Anderson	Johnson	Jenner	Elbro	George	Toussaint
SEPTEMBER																							
1	NOTTINGHAM FOREST	L 1-6	5	449	A Kennedy																		
8	Burnley	W 1-0	4	543	L Harland	Thomas	Smith	Roberts	Johnson	Jenner	Holmes	Anderson	George	J Cross	Greengrass	Hughes 1	Loydon	Merrick	Toussaint	Fryer	Banaras	Elbro	Denham
15	HULL CITY	W 4-0*	3	387	S Brown	Thomas	Johnson	Roberts	Morphet	Jenner	Merrick	Anderson	George	Toussaint	Greengrass	Hughes 1	Smith	J Cross	Elbro	Fryer	Banaras	Hiscox	Denham
22	Stoke City	D 2-2	5	306	L Gill	Thomas	Morphet	George	Hughes 2	Greengrass	Johnson	Anderson	Toussaint	Roberts	Jenner	Merrick 1	Smith	Loydon	Banaras	J Cross	Denham	Elbro	Fryer
25	Sporting Khalsa	W 5-2	4	210	S Hale	Thomas	Johnson	Roberts	Morphet	Jenner	Merrick	Anderson	George	Toussaint	Greengrass	Hughes 2	Denham	J Cross	Loydon	Clarke	E Cross	Fryer	Banaras
28	AFC FYLDE	W 3-0	-	253	S Hale	Thomas	Johnson	Roberts	Morphet 1	Fryer	Merrick 1	Banaras	George 1	Toussaint	Greengrass	Hughes 2	Anderson	Loydon	Denham	J Cross	Quigley	Clarke	E Cross
						Clarke	Johnson	Fryer	E Cross	Jenner	Banaras	Anderson	Loydon 1	J Cross	Merrick 2	Denham	Hughes	Hiscox	George	Greengrass	Quigley	Morphet	Calder
OCTOBER																							
6	RUGBY BOROUGH	W 2-0	3	526	M Karia	Thomas	Johnson	Roberts	Morphet	Jenner	Merrick	Anderson	George	Toussaint	Greengrass 2	Hughes	Loydon	J Cross	Clarke	Fryer	Banaras	Quigley	Denham
13	West Bromwich Albion	W 8-0	2	1,968	L Catchpole	Thomas	Johnson	Roberts	Morphet	Jenner	Merrick 1	Anderson	George 2	Toussaint	Greengrass 4	Hughes	Loydon	J Cross 1	Banaras	Quigley	Denham	Clarke	Fryer
20	Cheltenham Town	L 1-2	-		I Hooper	Clarke	Fryer	Roberts	Morphet 1	Jenner	Loydon	Anderson	Banaras	J Cross	Denham	Hughes	Greengrass	Merrick	Toussaint	Hiscox	Johnson	Thomas	E Cross
27	HALIFAX	W 6-0	1	304	S Brown	Thomas	Johnson	Roberts	Morphet	Jenner	Merrick 1	Anderson	George	Toussaint	Greengrass 1	Hughes 1	Loydon	Banaras	Quigley 2	J Cross	Denham 1	Clarke	Fryer
NOVEMBER																							
3	Asfordby Amateurs	W 7-1	-	517	J Johnson	Thomas	Johnson	E Cross	Morphet	Fryer	Merrick 1	Loydon 1	George 3	J Cross	Hiscox	Quigley 2	Smith	Banaras	Calder	Greengrass	Toussaint	Roberts	Anderson
10	Liverpool Feds	W 2-1	1	172	L Jell	Thomas	Johnson	Roberts	Morphet	Jenner	Merrick	Anderson	George	Toussaint	Greengrass	Hughes 1	J Cross	Quigley 1	Clarke	Fryer	Banaras	Loydon	Denham
17	Coventry Sphinx	W 16-0	-		N Love	Clarke	Fryer 1	Roberts	Morphet	Jenner 1	Merrick 1	Anderson	George 2	Toussaint 3	Greengrass 2	Hughes 3	Hiscox	Calder 2	Loydon	J Cross 1	Denham		
24	SPORTING KHALSA	W 8-1	-	386	S Hale	Thomas	Johnson	Roberts	Morphet	Jenner	Merrick 1	Anderson	George	Toussaint 2	Greengrass 1	Hughes 2	Denham 1	J Cross 1	Smith	Hiscox	Loydon	Fryer	Quigley
DECEMBER																							
8	SHREWSBURY TOWN	W 14-0	-	568	A Kennedy	Thomas	Johnson	Roberts	Morphet 1	Jenner	Merrick 2	Anderson 1	George 1	Toussaint 1	Greengrass 5	J Cross 2	Loydon	Denham 1	Hiscox	Calder	Woodward		
15	West Bromwich Albion	D 1-1**	-		R Jennings	Clarke	Johnson	Roberts	Morphet	Jenner	Merrick	Anderson	George	Toussaint	Greengrass 1	J Cross	Quigley	Loydon	Denham	Fryer	Hiscox		
JANUARY																							
12	Cheltenham Town	W 2-0	-	576	A Freulet	Thomas	Johnson	Roberts	Morphet	Smith	Merrick 1	Anderson	George	Toussaint	Greengrass	Hughes 1	J Cross	Hiscox	Quigley	Denham			
19	Stourbridge	W 7-2	2	258	L Hurst	Thomas	Johnson	Roberts	Morphet	Smith	Merrick	Anderson	George	Toussaint	Greengrass 3	Hughes 4	Jenner	Holmes	Loydon	Quigley	Denham	Clarke	Hiscox
26	DERBY COUNTY																						
FEBRUARY																							
2	Rugby Borough																						
9	MANCHESTER UNITED																						
12	SPORTING KHALSA																						
23	STOKE CITY																						
MARCH																							
9	Hull City																						
16	BURNLEY																						
23	WEST BROMWICH ALBION																						
APRIL																							
13	Halifax																						
27	LIVERPOOL FEDS																						
TBC	Nottingham Forest																						

* own goals - Hunt (Hull City)
 ** Lost 2-4 on penalties (WBA)

Fixtures correct at time of going to print.
 To see our fixtures please scan the QR code or visit wolves.co.uk/fixtures/womens-first-team



Admission to Wolves Women league games at SEAH Stadium is free for Wolves and Telford United season ticket holders.

For non-season ticket holders, tickets can be purchased online in advance from the Telford United website for a reduced price of £5 for adults, £4 for concessions and £1 for 3-16s. Payment is also accepted on the gate via card or cash with admission costing £6 for adults and £5 for concessions. Thank you for your support.



SEAH STADIUM | SUNDAY 26TH JANUARY 2025

WOLVES

- 3 Anna Morphet
- 4 Summer Holmes
- 5 Emma Cross
- 7 Tammi George
- 8 Merrick Will
- 9 Jade Cross
- 10 Abi Loydon
- 11 Amber Hughes
- 12 Charlotte Greengrass
- 13 Bec Thomas
- 14 Martha MacPhail
- 16 Racheal Quigley
- 17 Katie Johnson
- 18 Hannah Fryer
- 19 Becky Anderson
- 20 Ania Denham
- 21 Destiney Toussaint
- 22 Beth Roberts
- 23 Josie Smith
- 25 Amelia Hiscox
- 26 Maddie Calder
- 27 Abbi Jenner
- 28 Beth Merrick
- 30 Charlotte Clarke
- 31 Skye Owen
- 39 Sophie Woodward

DERBY COUNTY

- 1 Lucy Jones
- 2 Sarah Tweedie
- 3 Megan Tinsley
- 4 Charlotte Steggles
- 5 Sarah Jackson
- 7 Emelia Wilson
- 8 Emily Joyce
- 9 Chené Muir
- 10 Hannah Ward
- 11 Kate Oakley
- 12 Camille Jenkins
- 14 Becky Hogg
- 15 Kira Rai
- 16 Bethan McGowan
- 17 Helena Meadows
- 18 Paris Dalton
- 19 Daisy Burt
- 20 Amy Cotton
- 21 Sarah Morgan
- 23 Rebecca May
- 25 Evie McCaffrey



MATCH OFFICIALS

Referee: Abigail Greenwood | **Assistant referees:** Martin Chilver, Ryan Dobson

NEXT UP AT SEAH STADIUM

Manchester United
Weekend of Sunday 9th February 2025 | Adobe WFA Cup

